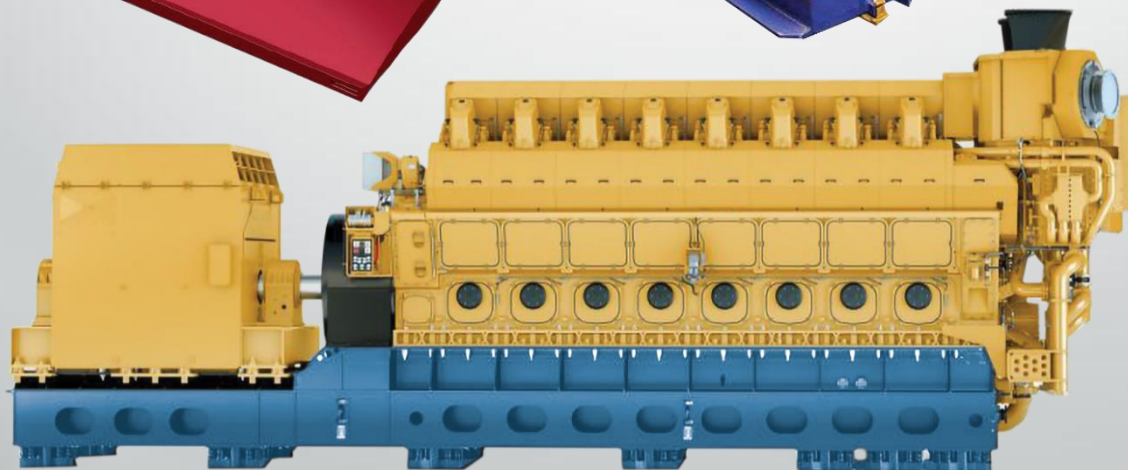
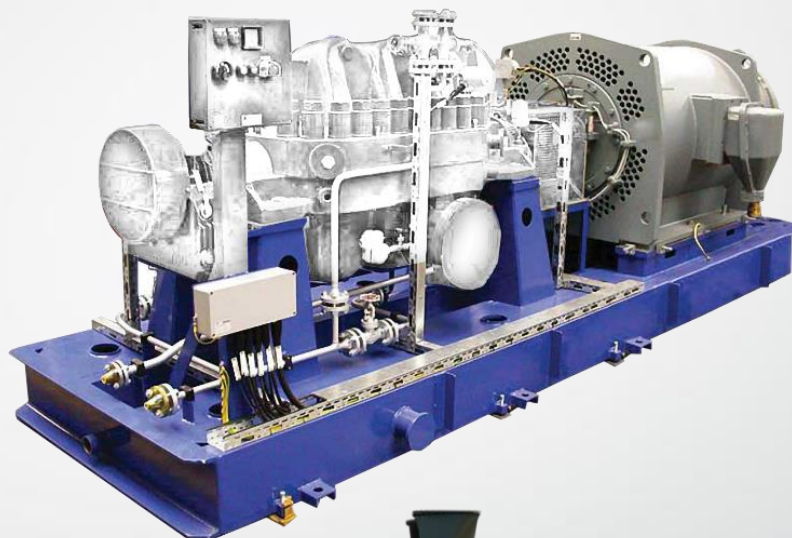


TM TECHNOLOGY

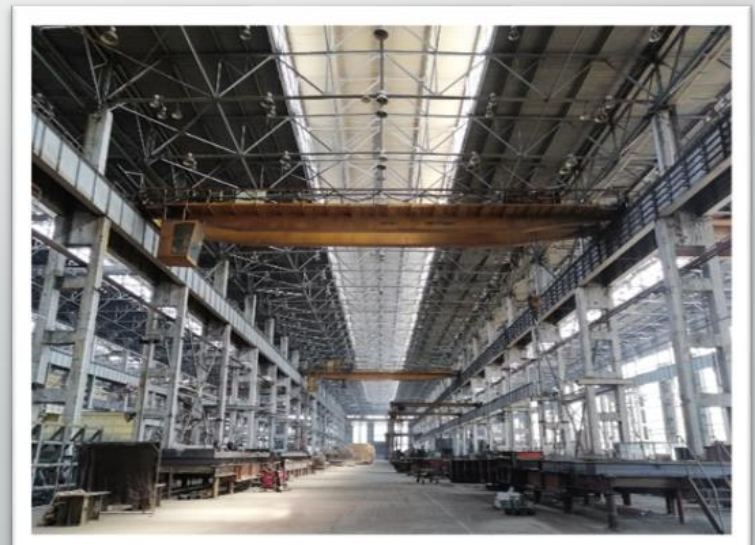


LOCATION



The plant is located on the Danube riverside in Ruse, Bulgaria, 70 km from Bucharest's Otopeni Airport.

- Sheltered factory area: 65 000 M²
- 30+ cranes with a lifting capacity 5, 10, 20, 30, 50, 80 and 160 tons, lifting carts, internal railways.
- Direct access to railway, river port, and roads



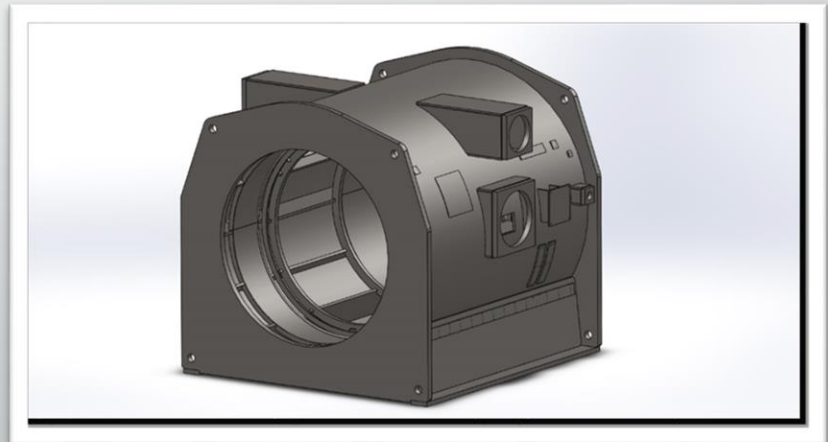
ENGINEERING DEPARTMENT AND QUALITY CONTROL TEAM



In-house Engineering team
for adapting and following projects
on site.

A Quality Control team of skilled and
qualified professionals.

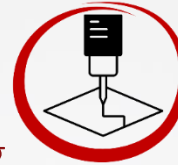
With the proper tools.
With knowledge.
With experience.
And a bit of passion.



SELECTED EQUIPMENT

THERMAL CUTTING

30 KW Fiber Laser Cutting



- Working table dimensions – 24000x4000mm
- Max. cutting thickness - 80mm
- 3D Angle cutting head with cutting range from 0° to 45°

SELECTED EQUIPMENT



THERMAL CUTTING



MicroStep CNC Oxy-Plasma Cutting Machine

- 12000x4000mm.
- Max cutting thickness – 300 mm.
- 3D rotary head up to $\pm 50^\circ$.
- Accuracy of positioning : ± 0.1 mm.



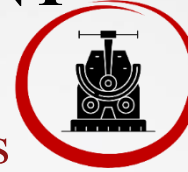
Fiber Laser Cutting NF PRO 620 – 6KW

- 6050x2030mm.
- Max cutting thickness – 25 mm.
- Head: NUKON NLCH, automated focus.
- Accuracy of positioning : ± 0.05 mm.

SELECTED EQUIPMENT



CNC Hydraulic Bending Press



- Compression force: 8000KN or 800 tons
- Compression force per linear meter: 2500KN
- Length of folding: 8000mm.
- Distance between columns: 6400mm
- Anti-deformation system WILA compensate bending crowning
- CNC control with free programmable limits on all axes

MACHINING EQUIPMENT LARGE-SCALE UNITS



Gantry Type Machine VERXA MW175
Heidenhain TNC 640



Dimension travel:

X = 17 500mm Y = 7 600mm

Z = 2 500mm W = 2 500mm

Total load capacity: 80T

Precision of positioning:

X = 14 μm

Y = 8 μm

Z/W = 4.1 μm

Rotating table:

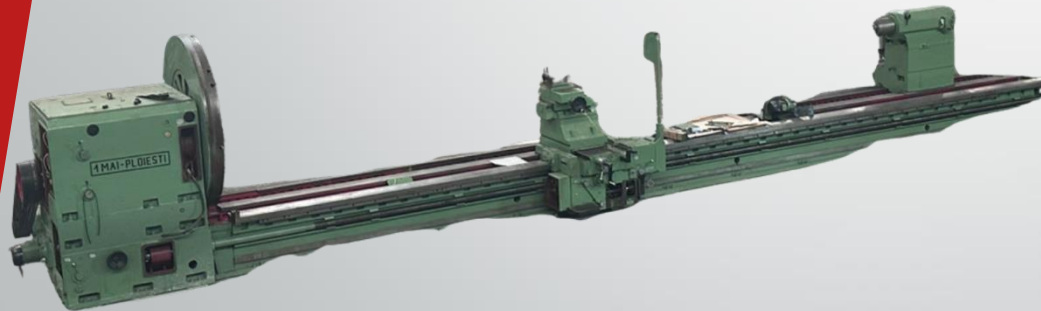
D = 3 000mm

Load capacity = 40T

MACHINING EQUIPMENT LARGE-SCALE UNITS



Heavy Duty Lathe SN1800X10000



Face plate diameter: 1800mm

Max swing over bed: 1780mm

Max swing over slide: 1450mm

Height of centers: 900mm

Distance between centers
10000mm

Max. weight of workpiece: 16 T

Speed range of the main spindle:
0.8 – 300rpm

MACHINES WITH CNC CONTROLS

Machining Centre SORALUCE FP-8000,
Heidenhein iTNC 530



Maximum dimensions of machined part - 7200x3100x1500mm



Travel dimensions

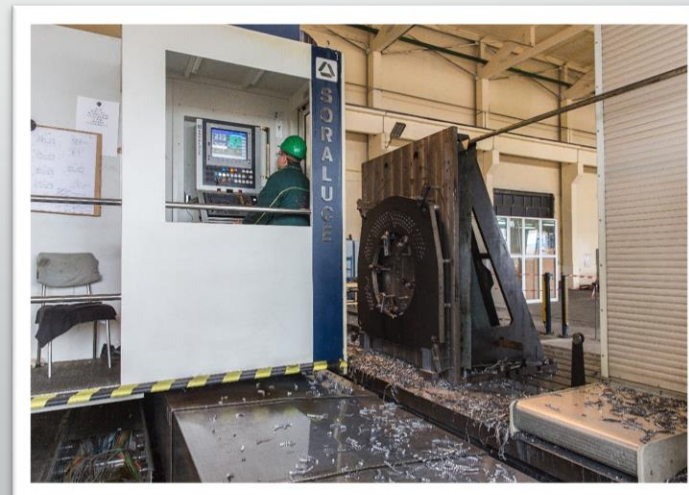
X = 8000 mm

Y = 2600 mm

Z = 1500 mm

Rotating table, Q=20t

dimensions – 2000mm x 2500mm



MACHINING EQUIPMENT LARGE-SCALE UNITS

Horizontal Boring machine



Travel dimensions

X = 17000 mm

Y = 5000 mm

Z = 2000 mm

Field Table, Q=60 T

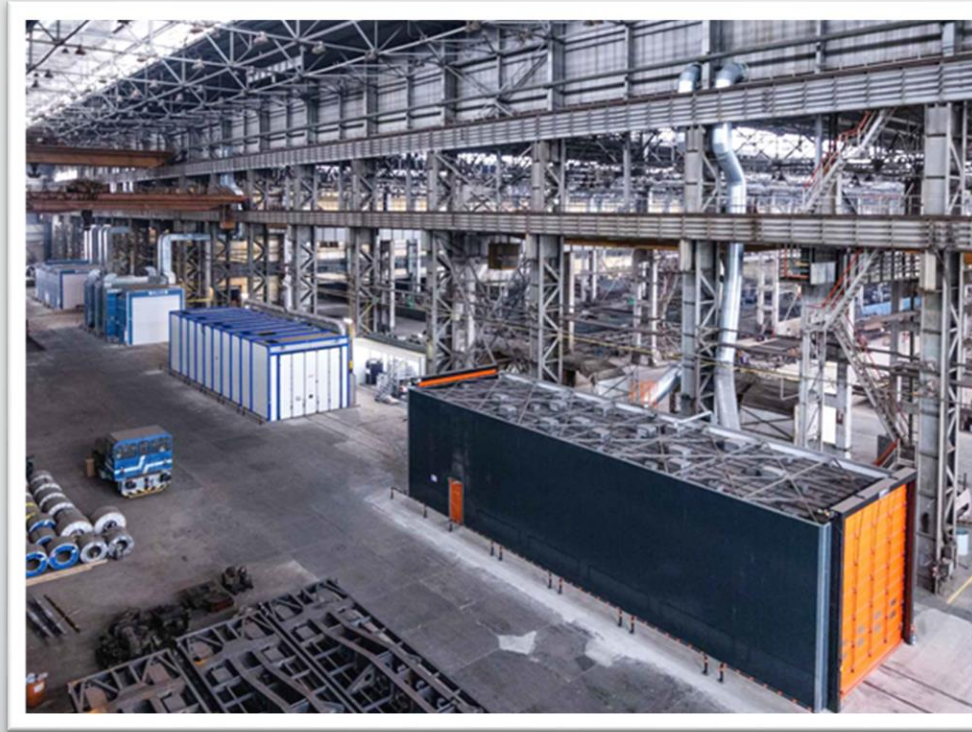
Rotating table, Q=24 T

dimensions – 2500mm x 2500mm



SELECTED EQUIPMENT

COATING LINE



1. ABRASIVE BLAST CLEANING

$L=24000 \times W=5500 \times H=5000 \text{mm}$

2. DEGREASING AND PHOSPHATING

$L=24000 \times W=4500 \times H=5200 \text{mm}$

3. DRYING CHAMBER

$L=24000 \times W=5000 \times H=5200 \text{mm}$

4. PAINTING AND DRYING

$L=24000 \times W=5000 \times H=5200 \text{mm}$

SELECTED EQUIPMENT

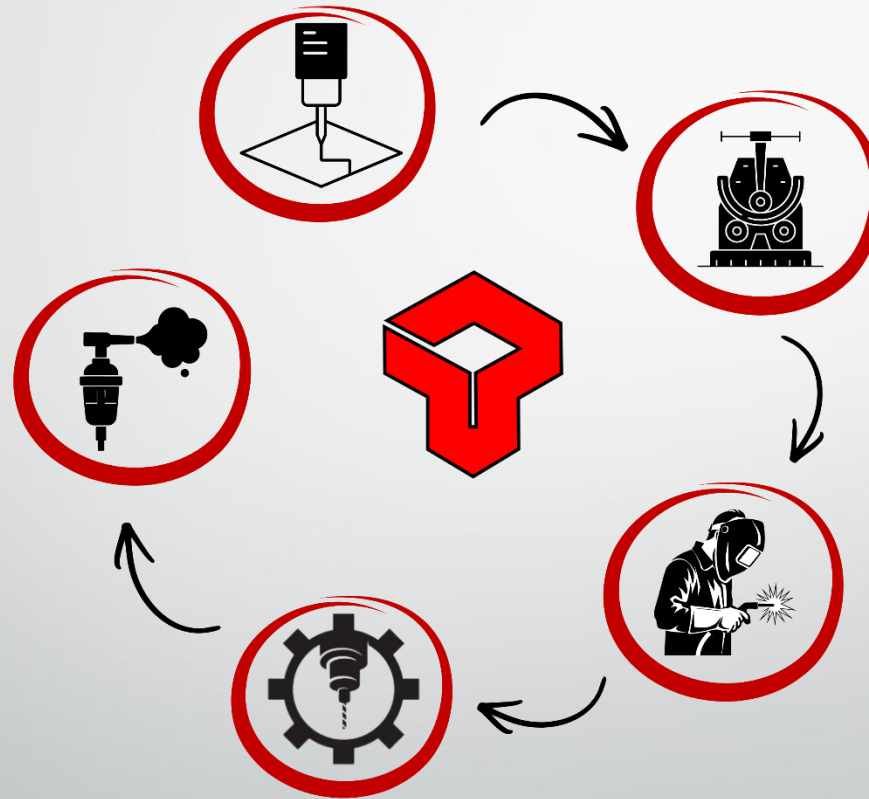
COATING LINE



The Painting chamber is supported by 3 stations:

- automatic paint mixing and automatic machine filling
- laboratory
- controlled temperature storage room for coatings.

ONE KEY ADVANTAGE: COMPLETE MANUFACTURING CYCLE



SELECTED EXAMPLE PROJECTS



GENSET BASEFRAMES

GENERATOR CASES

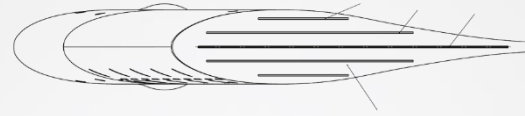
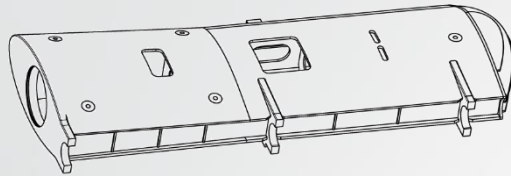
FIN BOX STABILIZERS
& FINS

ROLLING STOCK

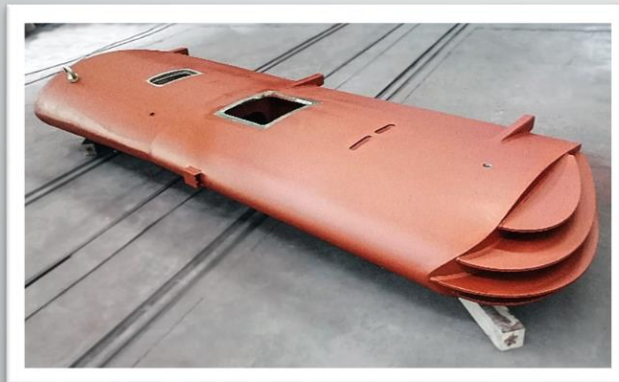
AND A LOT MORE...



MANUFACTURING



Stabilizer Fin Boxes up to 51T per unit and Fins



MANUFACTURING

Generator Cases up to 20T



MANUFACTURING



Baseframes with dimensions up to 18000x3500x1500mm

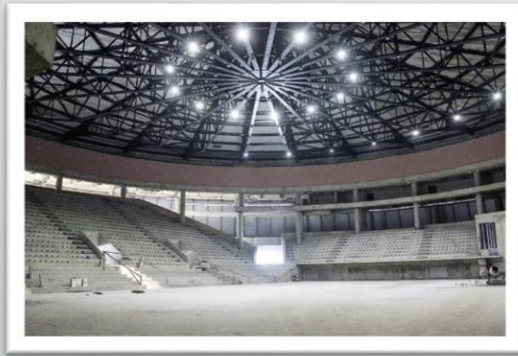


...and with weight up to 60 Tons per unit

MANUFACTURING



Welded Constructions according to Customer documentation and specifications



CERTIFICATES



- EN 1090-1
- EN 1090-2
- EN ISO 3834-2
- ISO 9001:2015
- WWA by DNV GL
- EN 15085-2
- Quality Policy
- Environmental Protection Policy
- OHS Policy





TM TECHNOLOGY

FOR MORE INFORMATION PLEASE CONTACT

Victor Petrov

Commercial Director

vik.petrov@tm-technology.bg

+359 898 323 200

THANK YOU FOR YOUR ATTENTION!

www.tm-technology.bg